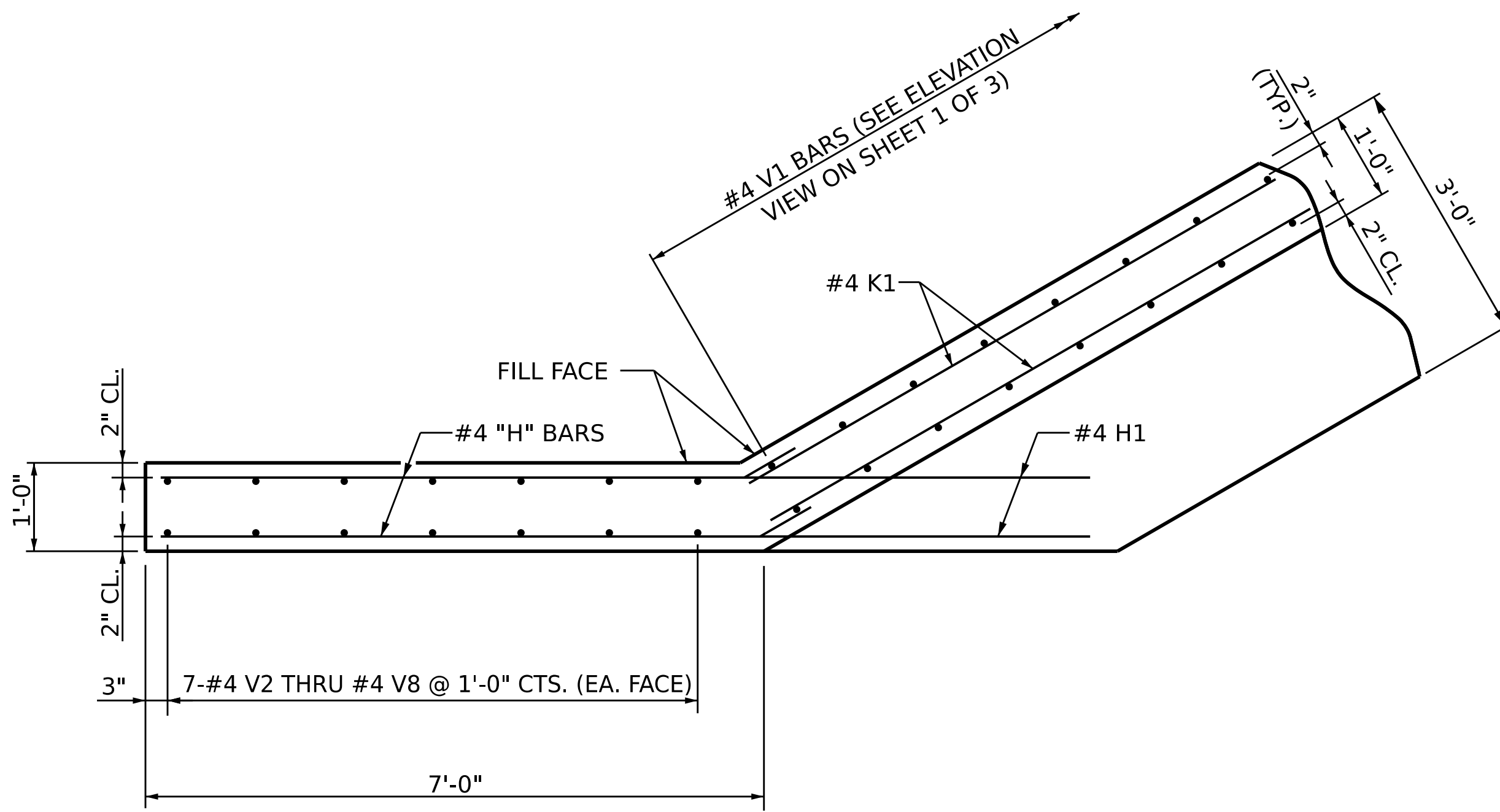
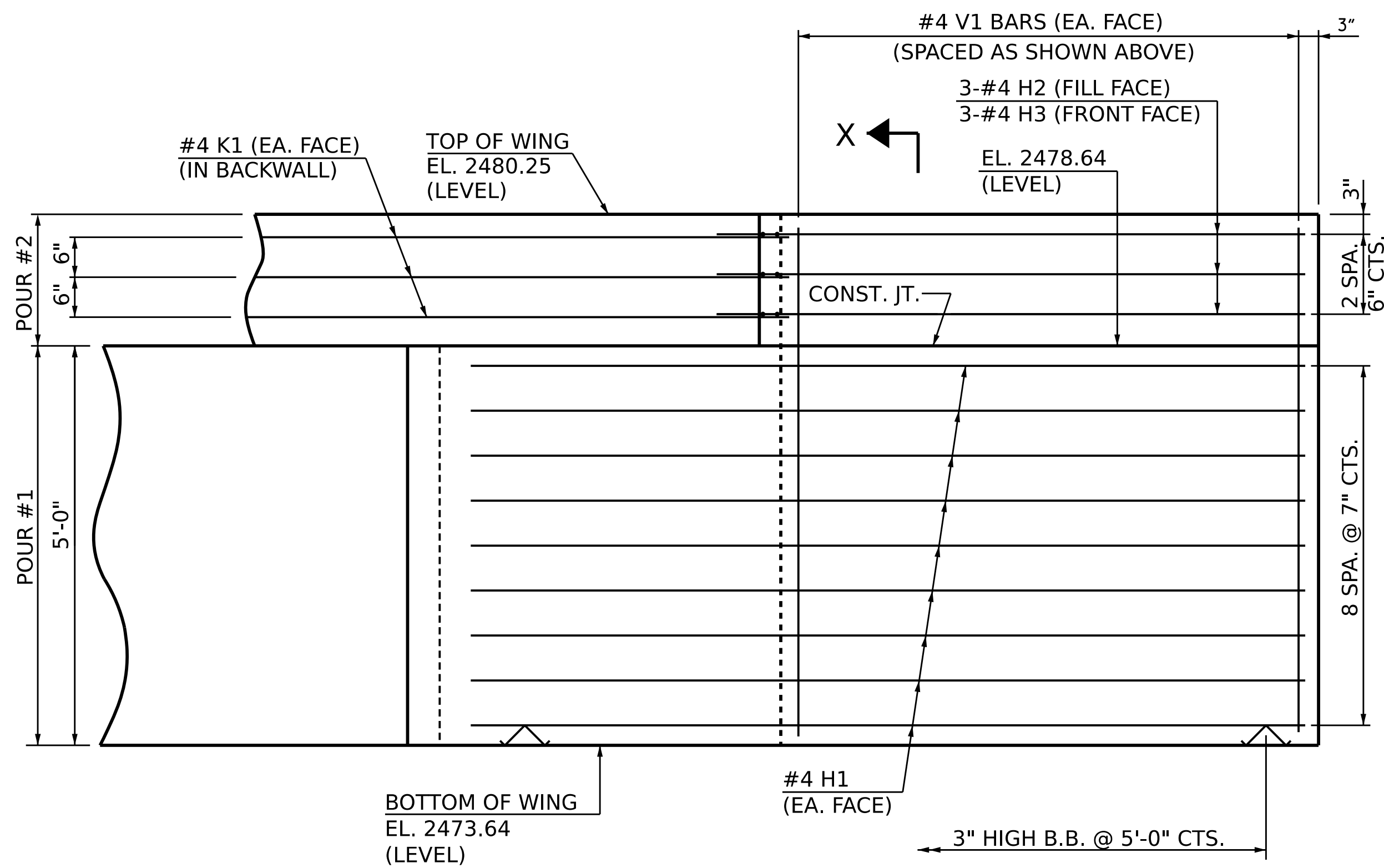


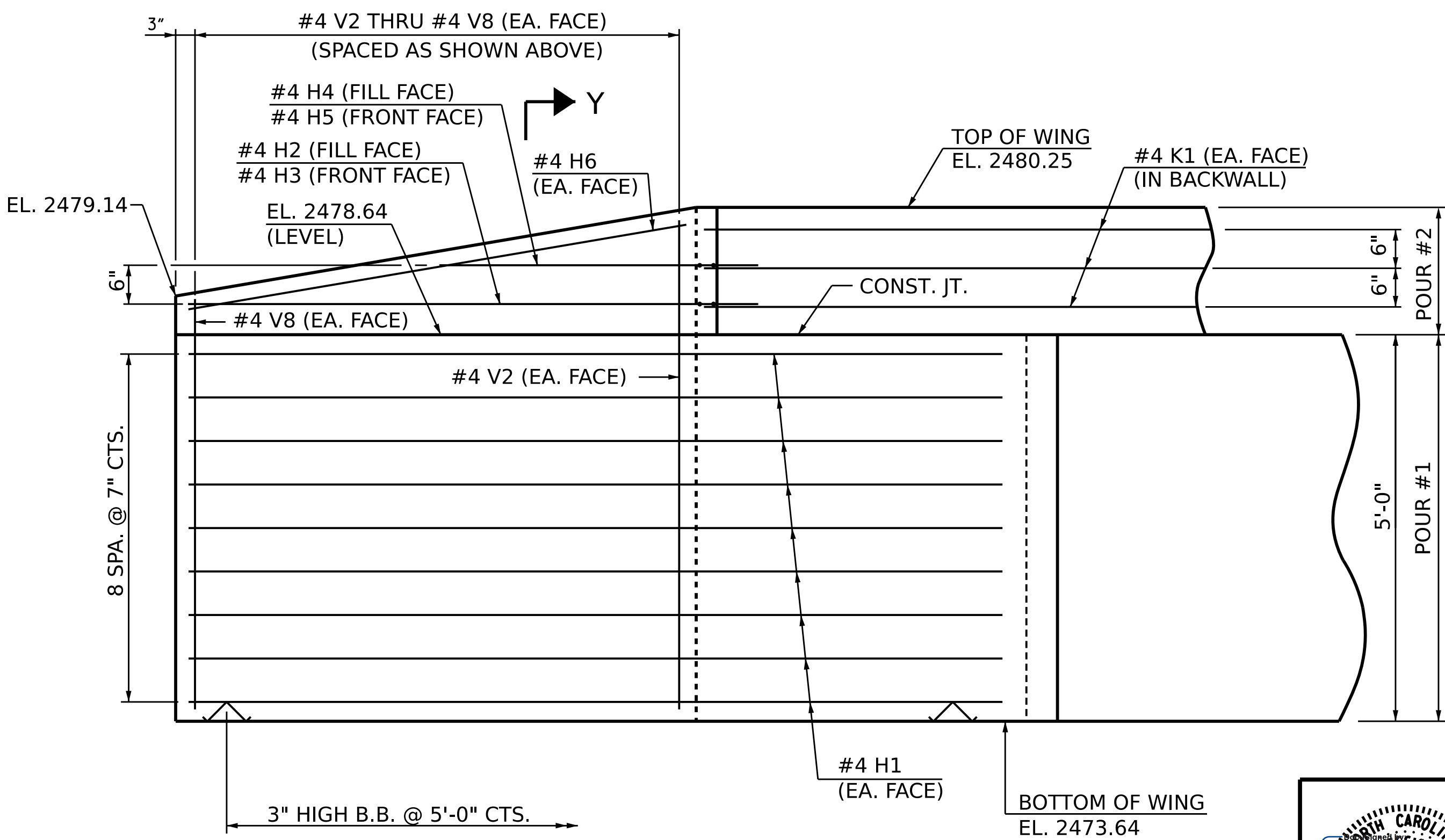
PLAN OF WING (W1)



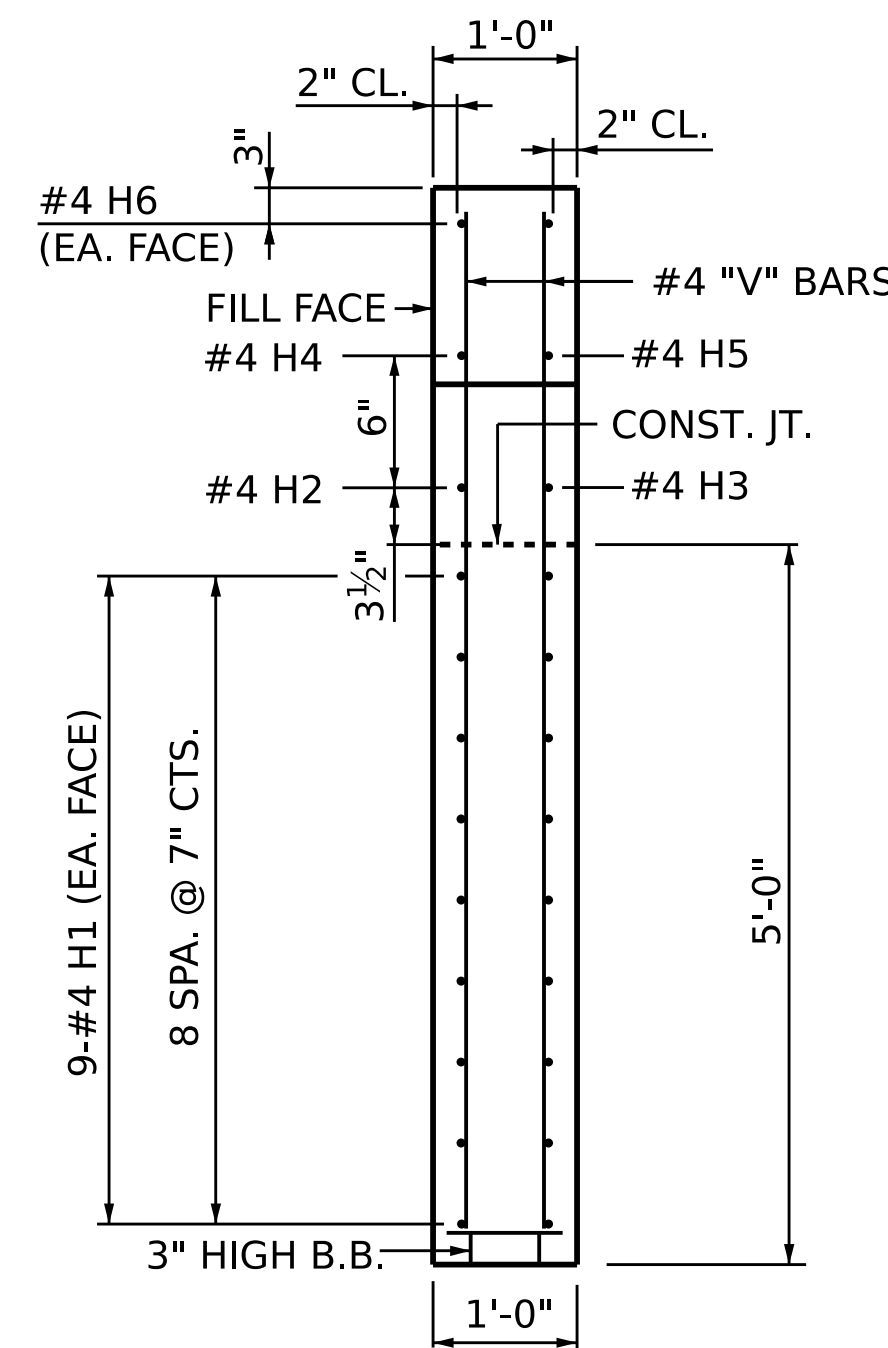
PLAN OF WING (W2)



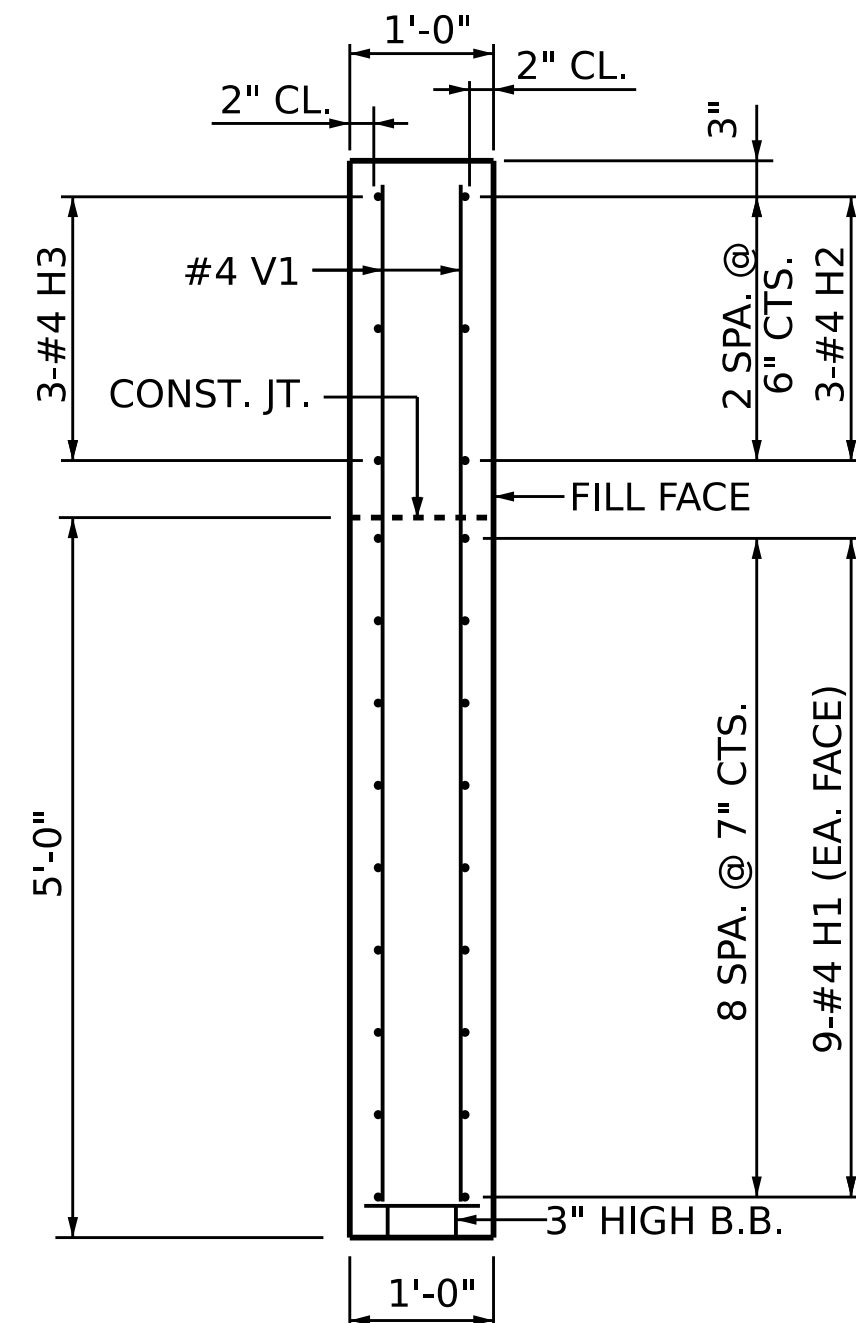
ELEVATION OF WING (W1)



ELEVATION OF WING (W2)



SECTION Y-Y



SECTION X-X

PROJECT NO.: 18314.1044073  
HAYWOOD COUNTY  
STATION: 12+13.00 -L-

SHEET 2 OF 3

STATE OF NORTH CAROLINA  
DEPARTMENT OF TRANSPORTATION  
RALEIGH

SUBSTRUCTURE  
END BENT 1  
WINGWALL DETAILS

REVISIONS					SHEET NO.
NO.	BY:	DATE:	NO.	BY:	
1			3		S-14
2			4		TOTAL SHEETS 21

DRAWN BY : B. H. GONFA  
CHECKED BY : B. D. KLAPPENBACH  
DESIGN ENGINEER OF RECORD: B. D. KLAPPENBACH  
DATE : JUL 2025  
DATE : JUL 2025  
DATE : JUL 2025

**RK&K**  
P: (919) 878-9560  
8601 Six Forks Road, Forum 1 Suite 700  
Raleigh, North Carolina 27615 | NC License No. F-0112  
Engineers | Construction Managers | Planners | Scientists  
www.rkk.com

STATE OF NORTH CAROLINA  
DEPARTMENT OF TRANSPORTATION  
RALEIGH  
18118A255  
15825  
ENGINEER  
BRUCE D. KLAPPENBACH  
12/15/2025

DOCUMENT NOT CONSIDERED FINAL  
UNLESS ALL SIGNATURES COMPLETED